

DATABAHN 



DATA SHEET

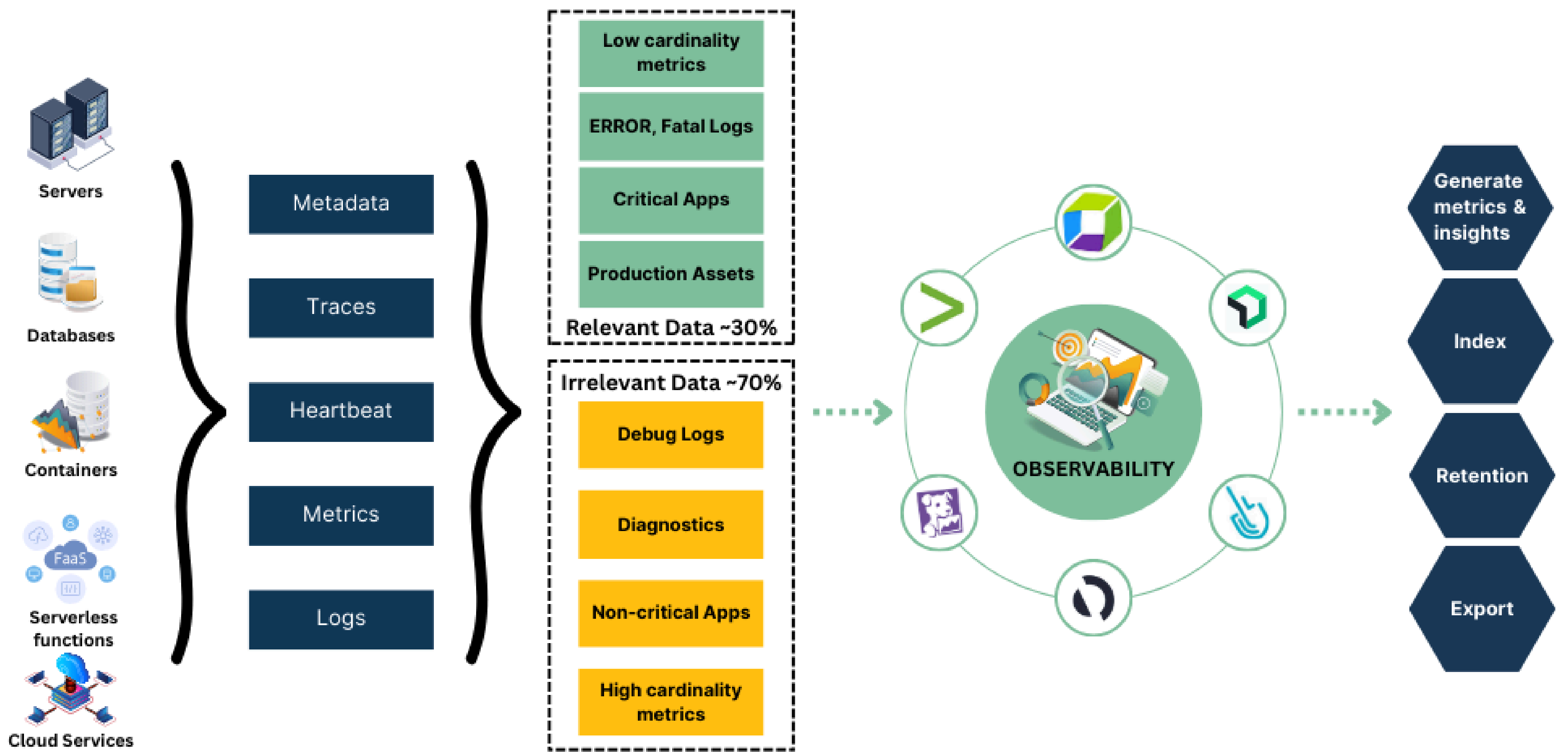
DATABAHN OBSERVABILITY DATA PIPELINE | *NextGen Data Fabric*

Simplify Observability - Collect, process, transform, and route any data anywhere

Take Control of your observability data

In today's microservices and containerized landscapes, alongside multitudes of agents and telemetry sources, organizations encounter significant hurdles in collecting, processing, and managing log data. Storing large volumes of log data is often prohibitively expensive, surpassing the value derived from the data itself. This forces organizations to make difficult trade-offs between cost and visibility, leading to potential blind spots in observability and security. Manual management of logs is time-consuming and labor-intensive. Collecting, transforming, and routing logs from various sources necessitates extensive configuration and ongoing maintenance. Additionally, the complexity of handling diverse log formats and protocols adds to the operational burden, further complicating log management efforts.

Introducing **DataBahn.ai**, a cutting-edge data fabric platform that lets you effortlessly manage logs from any source to any destination with just one seamless integration. DataBahn seamlessly ingests data from multiple feeds to aggregate, compress, reduce, and intelligently route it. As a data engineer-in-a-box, it standardizes, enriches, correlates, and normalizes the data before sending logs, insights, and metrics to Observability, Security, and Storage tools. DataBahn empowers organizations to efficiently manage their data pipeline with enhanced efficiency and accuracy.



Capabilities



EFFORTLESS INTEGRATIONS

Easily integrate with **400+ sources** (on-premise and cloud) and destinations out-of-the-box, including Observability, Storage, Security, Data Lakes



SEAMLESS ONBOARDING

Streamline the addition of new sources and destinations using a no-code interface, eliminating the need for extensive coding and reducing time to add new sources by **70%**



AGENT AGNOSTIC

Support a wide range of agents and tools using open standards and signals - reduce manual effort and the operational burden of managing multi-agent and multi-source systems



FORMAT CONVERSION & SCHEMA MONITORING

Seamlessly conversion into popular data formats facilitating faster downstream onboarding. Monitor log schema changes for proactive capability



SENSITIVE DATA DETECTION

Identify, isolate, and mask sensitive data traveling across your system and automatically quarantine it to ensure data security and compliance



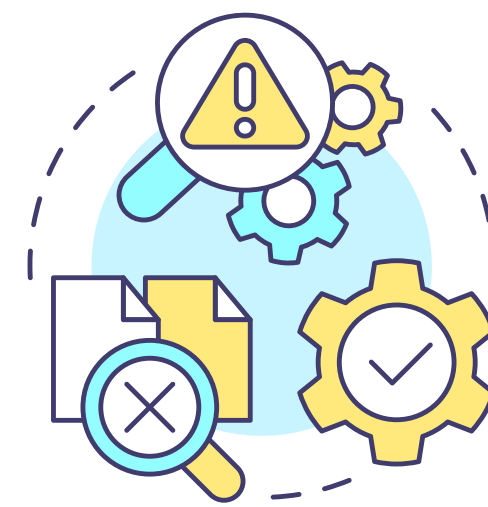
VALUE-BASED INGESTION

Prioritize and ingest only the most valuable log data, enabling you to optimize storage costs and enhance overall data utility while making compliance and security easier



LOG DE-DUPLICATION

Eliminate redundant log entries to reduce data volume and improve processing efficiency, ensuring cleaner, more accessible, and more actionable insights



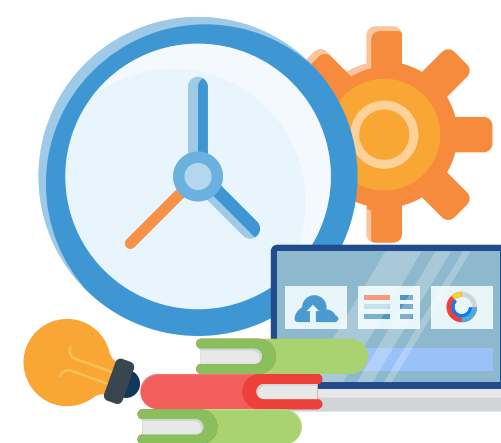
SEVERITY AND TAG-BASED FILTERING

Filter logs based on severity levels and tags, allowing for precise data analysis for quicker and more effective identification of critical issues to reduce MTTD and MTTR



LOG PROLIFERATION AND SUPPRESSION

Control log volume by setting time frames for log generation / suppression, reducing unnecessary data and making it easier to manage data volumes more effectively



TAG AND TIME-BASED SESSION REPLAY

Replay log sessions based on specific tags and time periods, facilitating detailed analysis and troubleshooting of historical events, providing meaningful context during threat hunting



LOG TO METRIC TRANSFORMATION

Convert log data into actionable metrics for more effective monitoring and analysis to drive better decision-making and visibility for SOCs and business leaders



DETECTION OF SPIKES

Identify sudden increases in log activity, allowing for prompt investigation and resolution of potential issues or anomalies

Benefits of using DataBahn

Critical Log Indexing

Index only the most critical log packages, ensuring efficient use of resources and focused data analysis

License Prioritization

Optimize license consumption by prioritizing based on application, service tier, or tags, ensuring cost-efficient operations

Session Replay

Replay sessions based on system-generated time slicing and data content for accurate historical analysis

Critical Tag Aggregation

Aggregate metrics based on critical tags to enhance monitoring and visibility of key data points

Snooze Metrics

Temporarily suspend metrics based on utilization to avoid unnecessary data processing and storage

Emergency Log Management

Implement time-bound log proliferation and suppression during emergency situations to manage data flow effectively

Code-free Metrics Creation

Generate metrics from logs without the need for code changes, simplifying the process and reducing development efforts

Cost Optimization

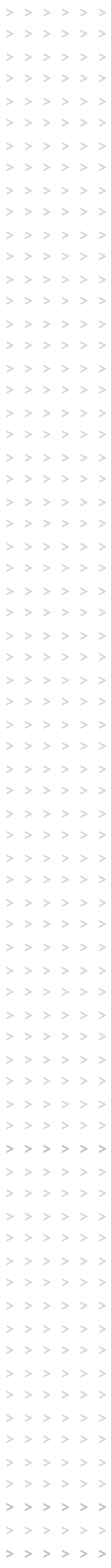
Optimize costs without altering your existing observability solution, maintaining seamless operations

Metrics Cardinality Optimization

Optimize the cardinality of your metrics to improve performance and manageability

Maintain Raw Data

Preserve raw data for retrospective insights and detailed analysis, ensuring comprehensive data availability



ABOUT DATABAHN

DataBahn.ai's Data Fabric empowers organizations to optimize data management, reduce costs, and enhance security and IT operations. By integrating AI readiness, addressing IT observability challenges, and offering flexible solutions, the platform delivers significant operational efficiencies and strategic benefits, setting a new benchmark for cybersecurity data management in the digital age.

Learn more at databahn.ai

DATABAHN 

